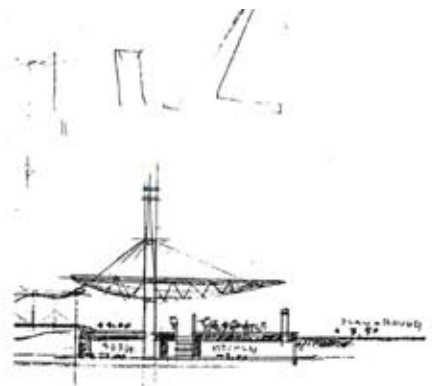
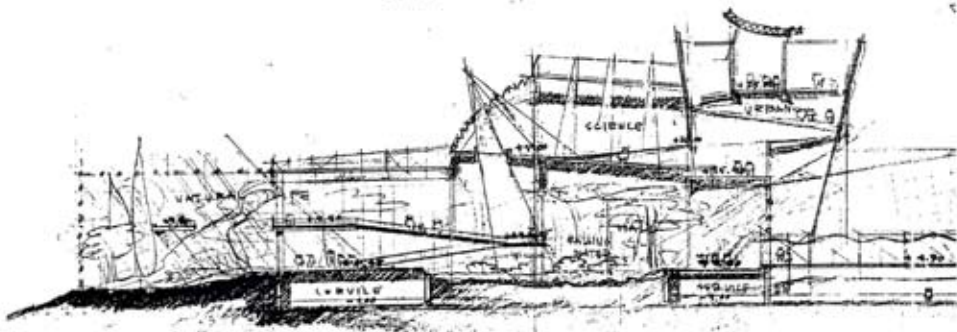


Part of these works and skills I initially engaged, prior coming to the United States. They are depicted from the works at Chulalongkorn University Faculty of Architecture and few works at Architect 49 Ltd. Through different architectural design projects and sketches, I had experimented pushing the visualization by using as many manual techniques and media available at a time from 1989-1995. I used them as a communicational tool in my conversation.

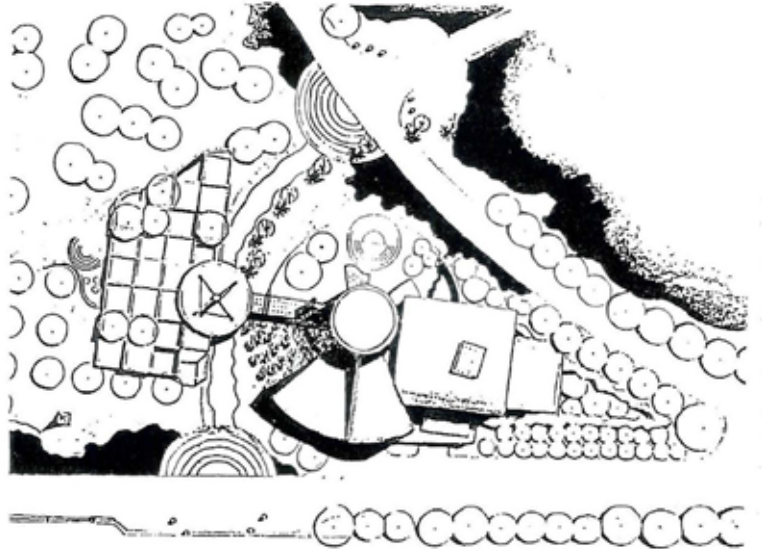
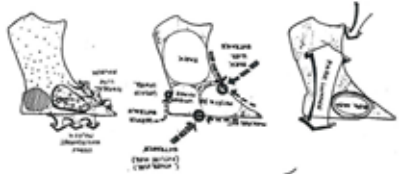
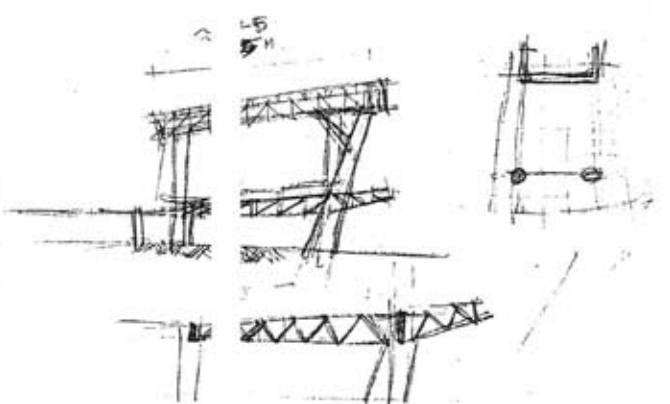
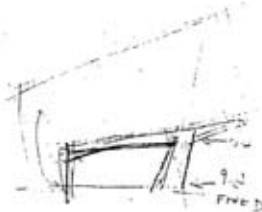
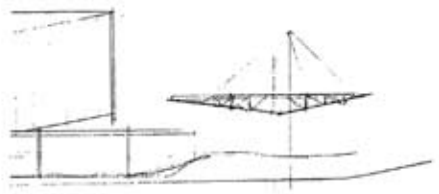
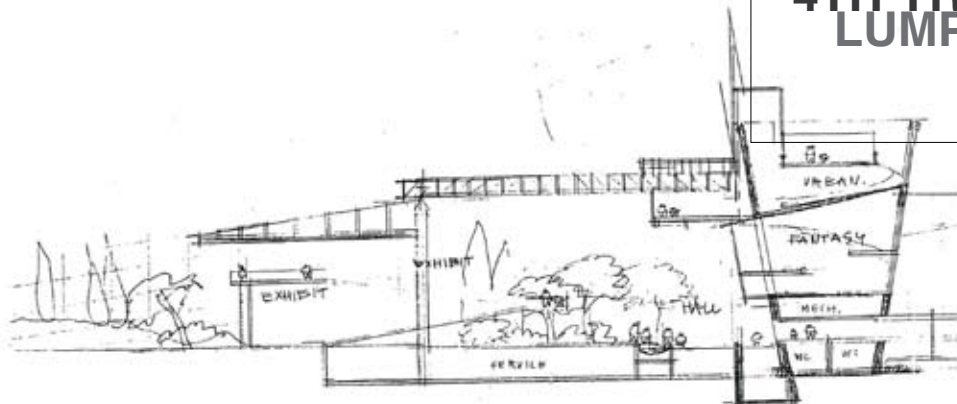
Notes: Equiped with all skills needed, as for the 5th YR Thesis, I chose to be challenged with the design for a new School of Architecture in Chiang Mai where I wanted to explore the possibilities of a creative environment that was in a total different setting from the urban campus.



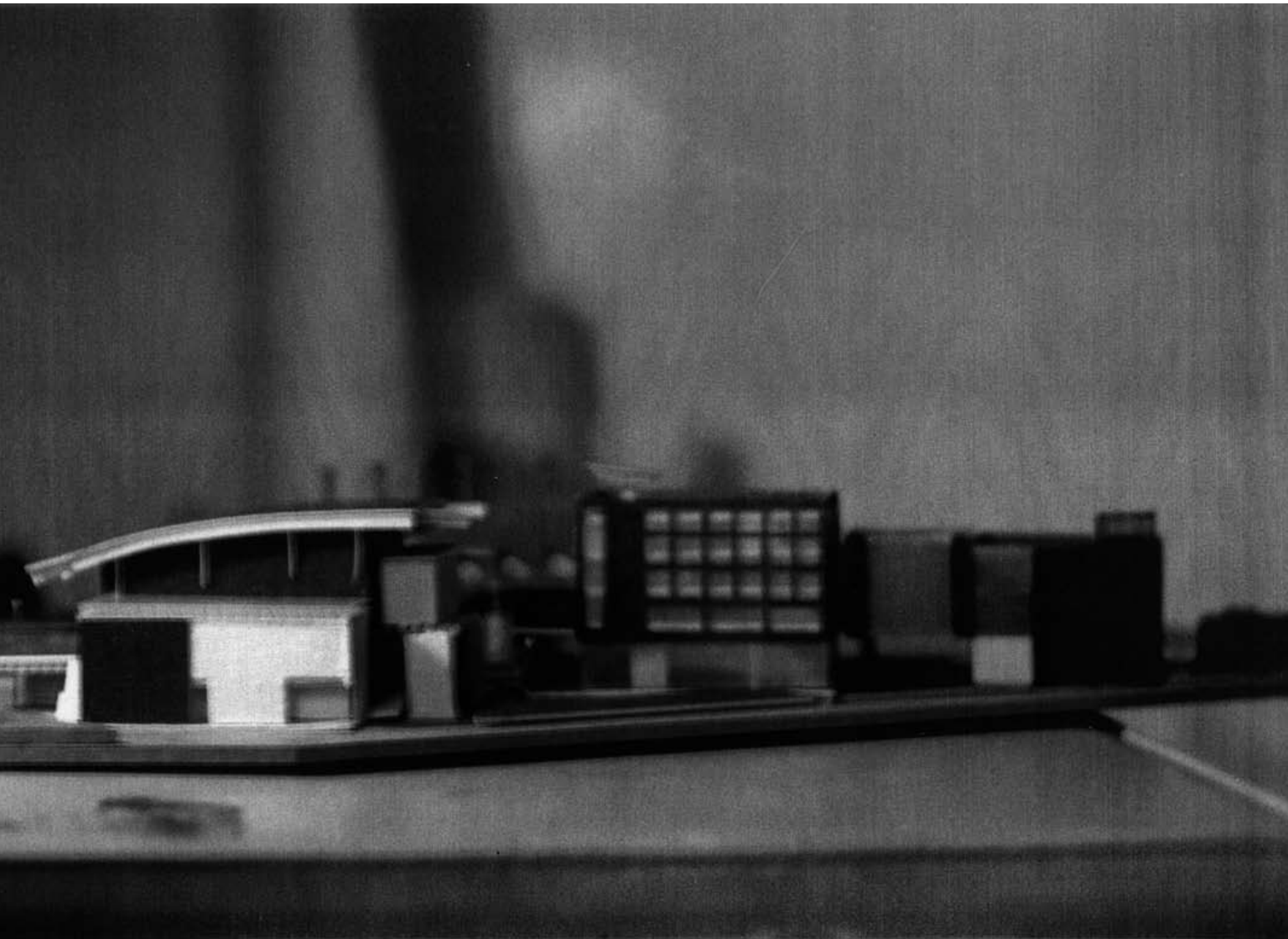
ศรัชัย วรรณเกษม

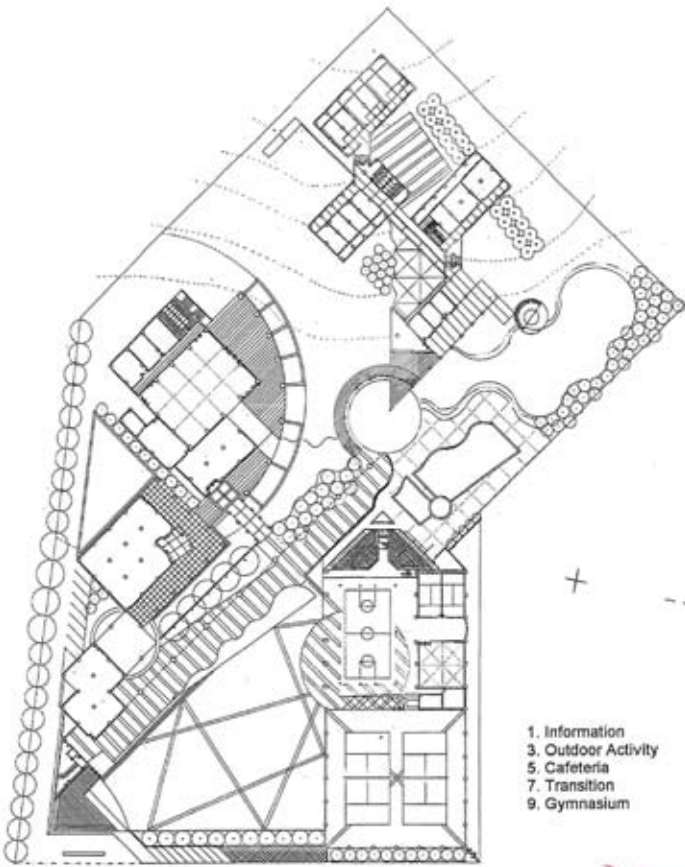


**4TH YR CHILDREN MUSEUM  
LUMPINI PARK, BANGKOK**

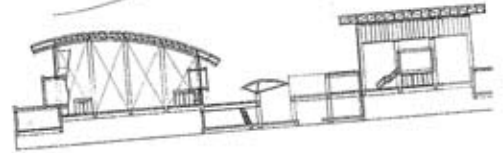
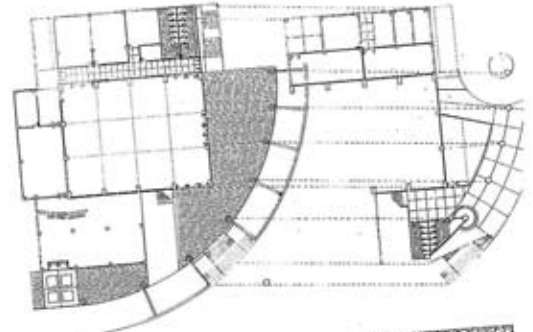


5TH YR\_ INTERNATIONAL  
YOUTH CLUB  
CHIANG MAI, THAILAND





- |                     |                   |
|---------------------|-------------------|
| 1. Information      | 2. Administration |
| 3. Outdoor Activity | 4. Exhibition     |
| 5. Cafeteria        | 6. Multipurpose   |
| 7. Transition       | 8. Dormitory      |
| 9. Gymnasium        | 10. Swimming Pool |

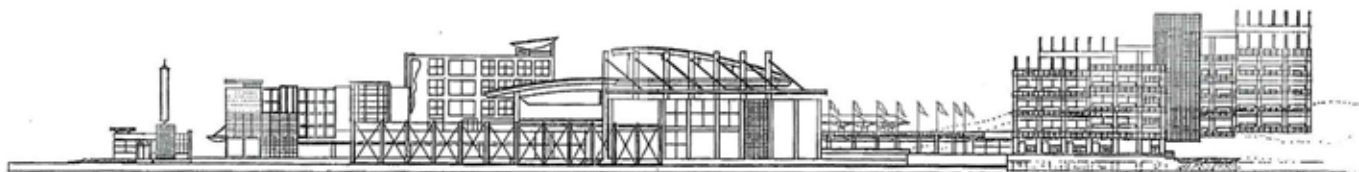
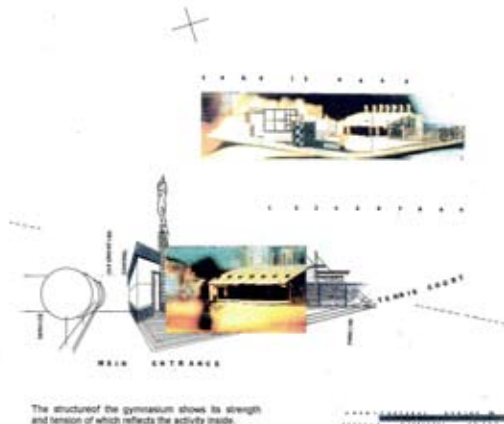
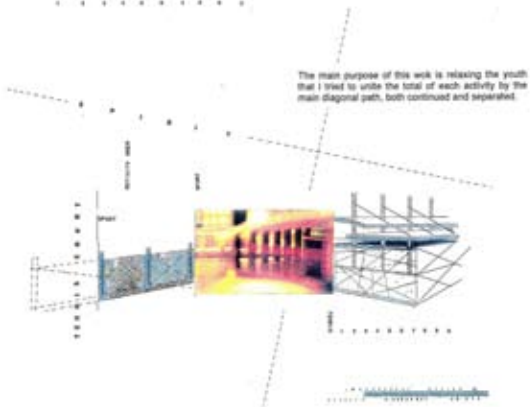
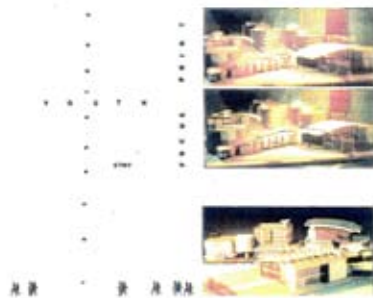
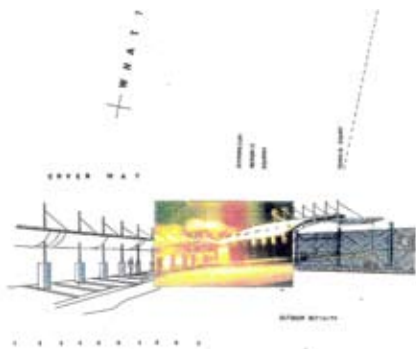


This project consists of the three grouping of activities;  
 The sport club  
 The extra curricular study  
 The dormitory

THREE IN TWO IN ONE

activity to face; showoff  
 study to increase; available  
 rest to peace; reveal

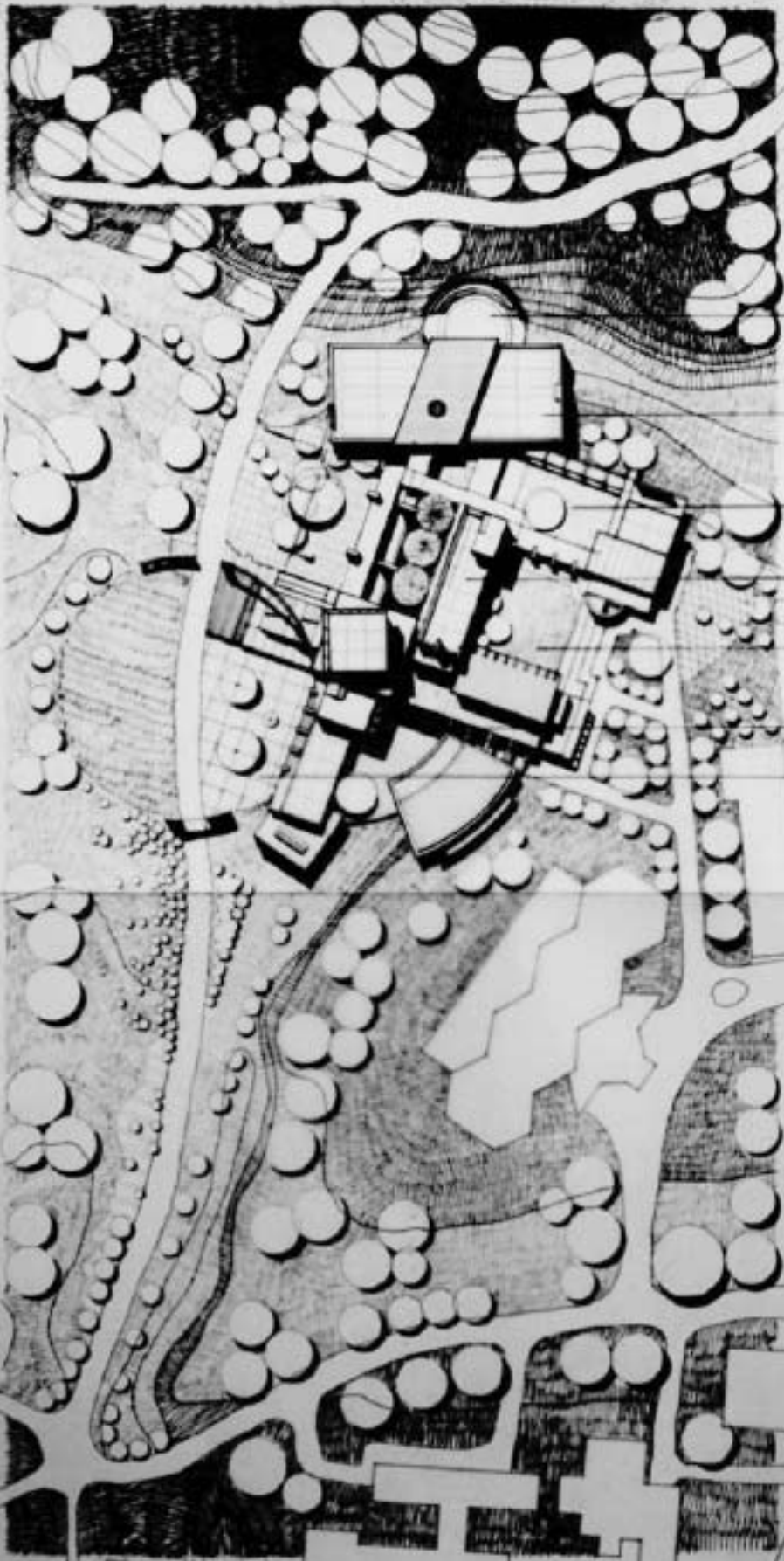






SCHOOL OF ARCHITECTURE  
CHIANG MAI UNIVERSITY

THESIS\_A NEW SCHOOL OF  
ARCHITECTURE  
CHIANG MAI, THAILAND



LANDSCAPE AMPHITHEATER

STUDIO

EDUCATION

FACULTY OFFICE

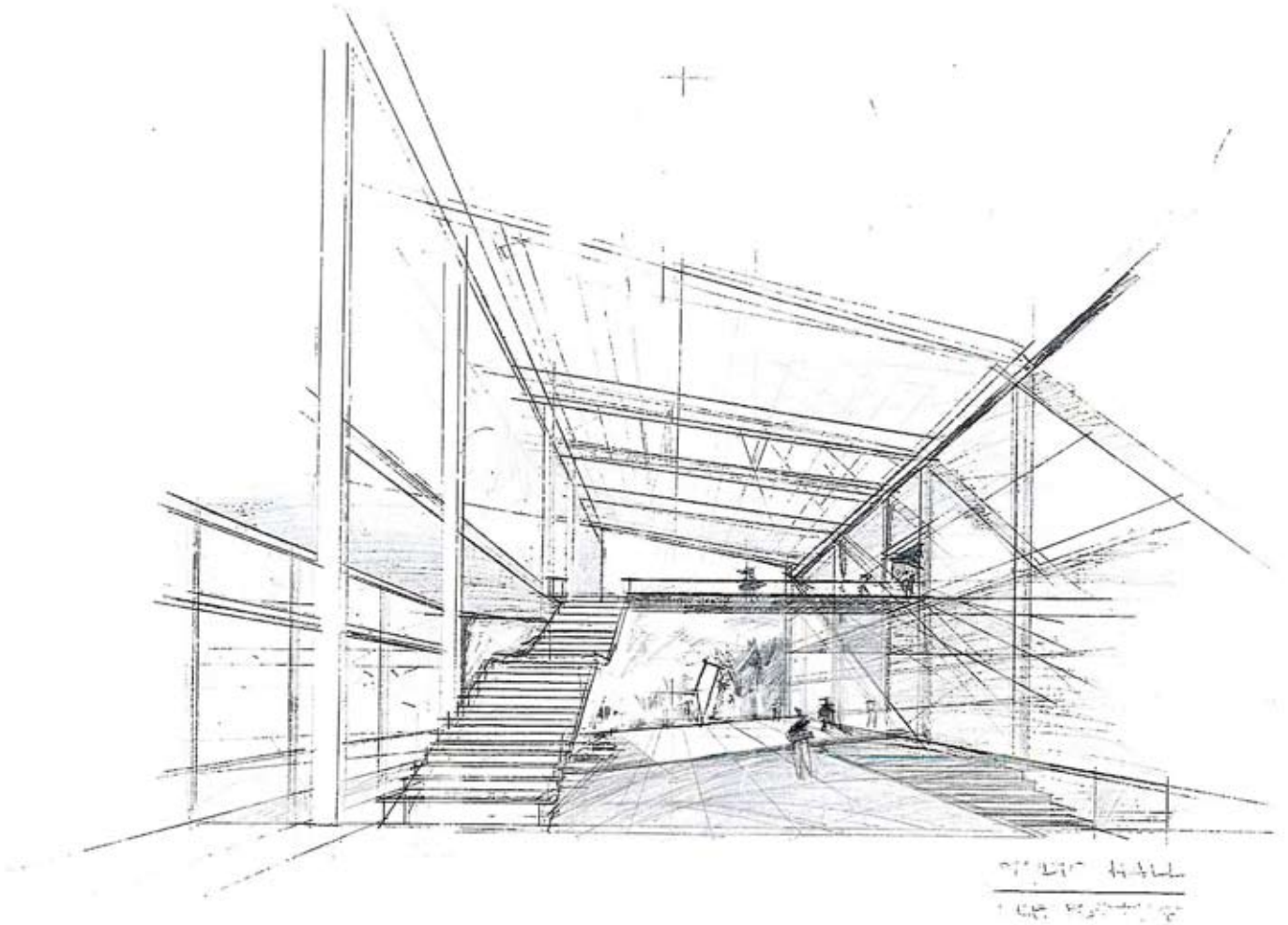
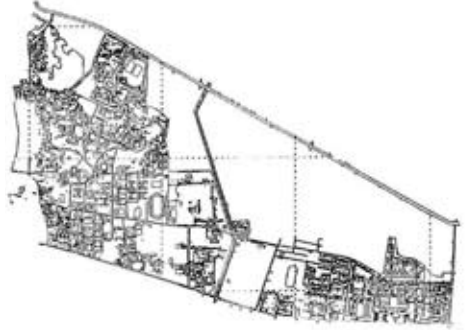
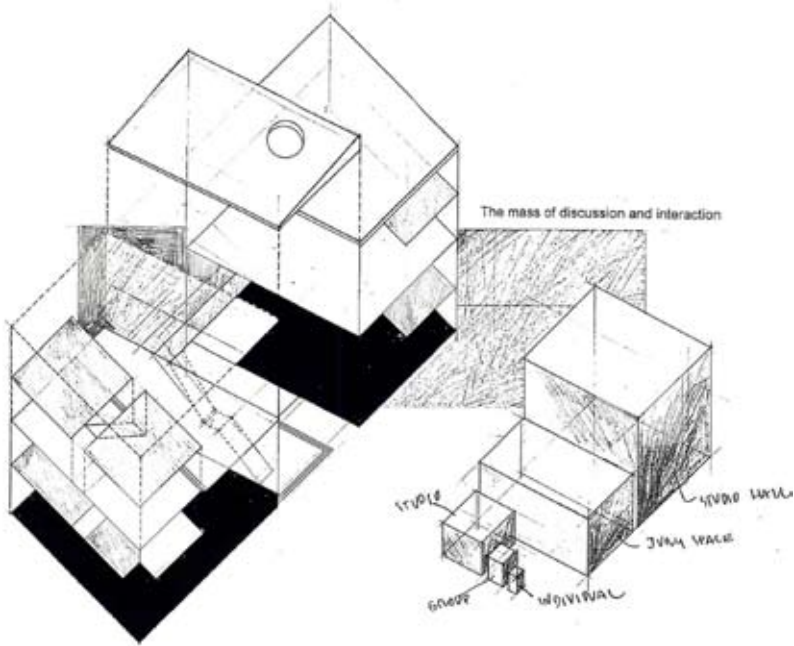
STUDENT ACTIVITY

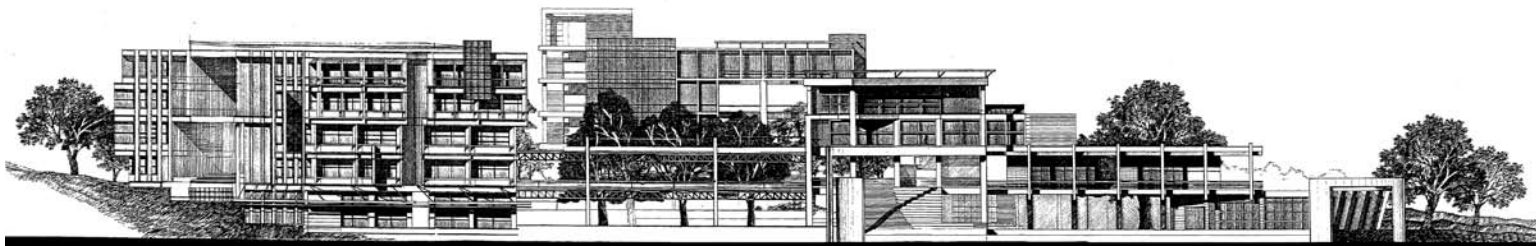
SEMINAR COURT

DOT PLAZA

SITE PLAN 1:500

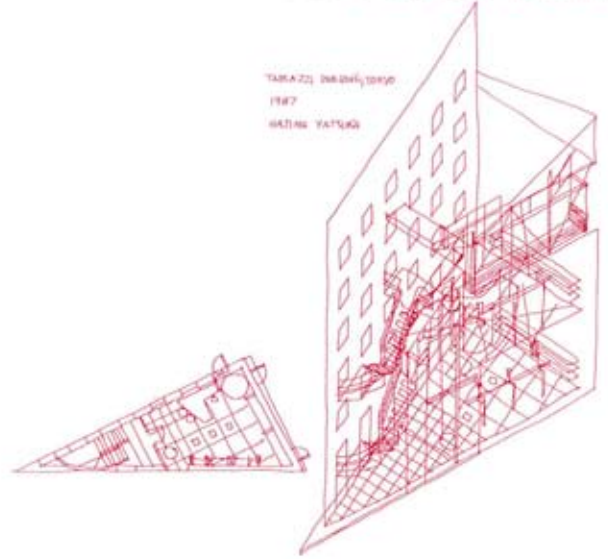
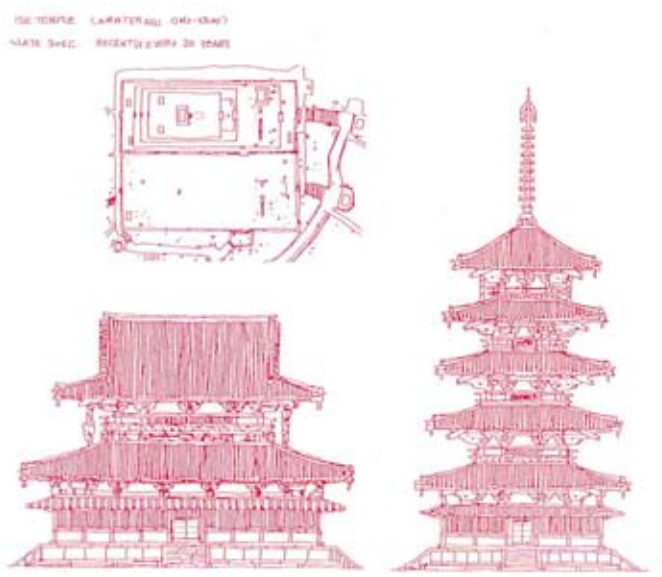
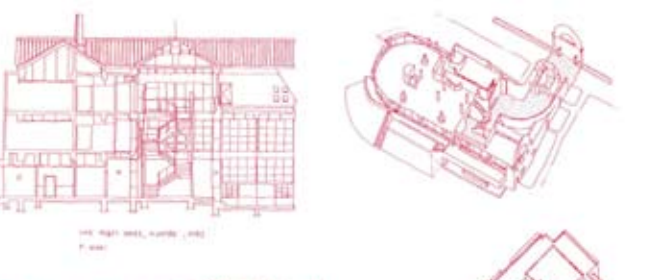
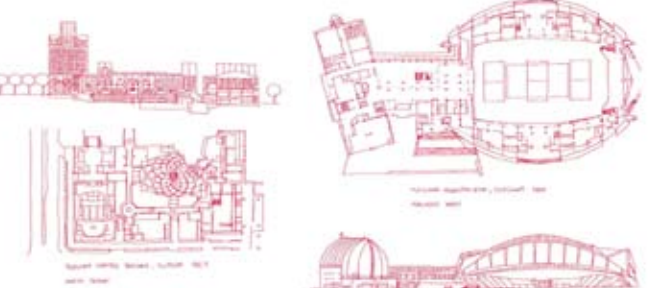
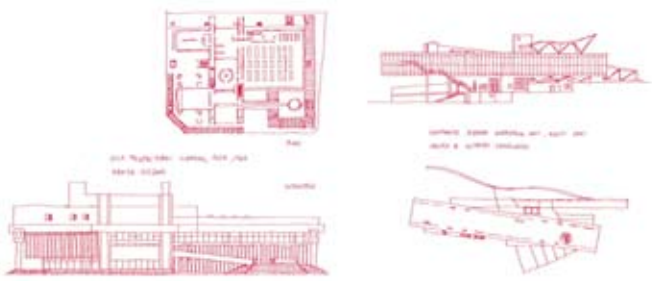
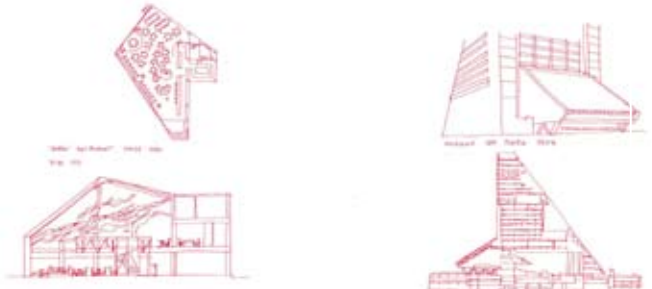
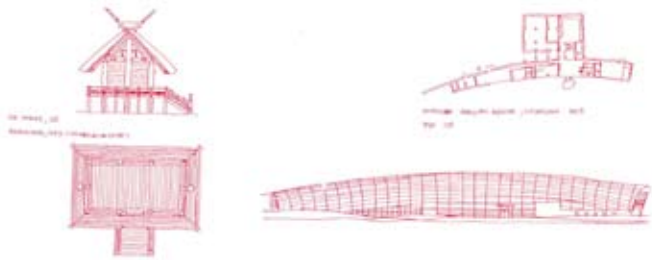




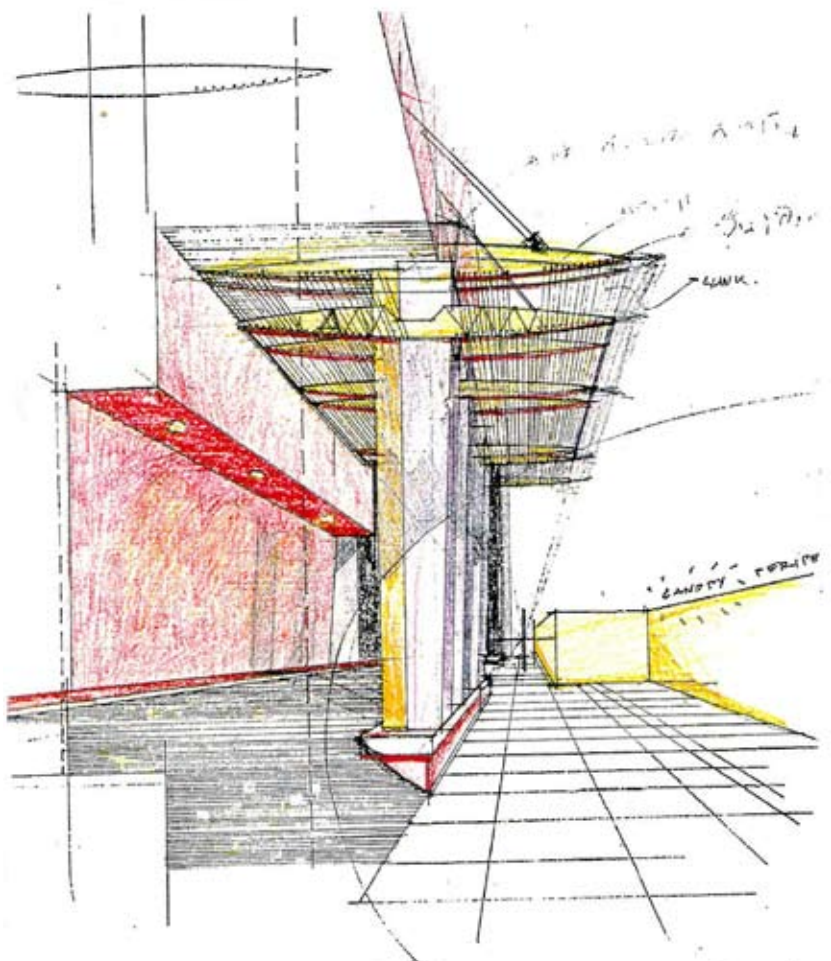
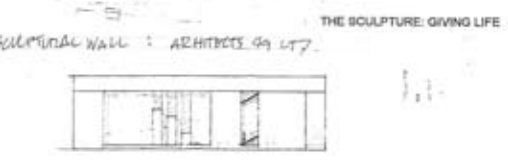
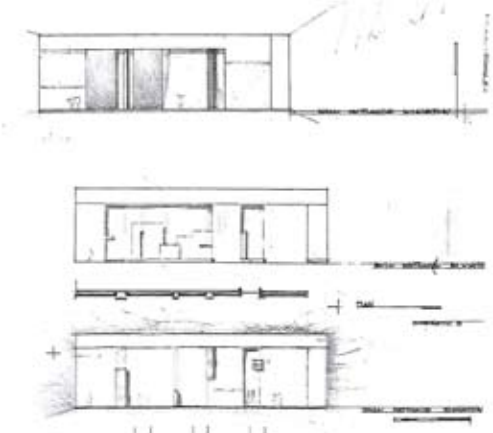
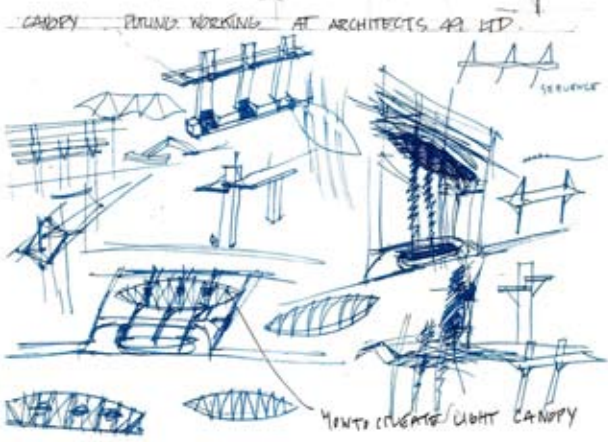


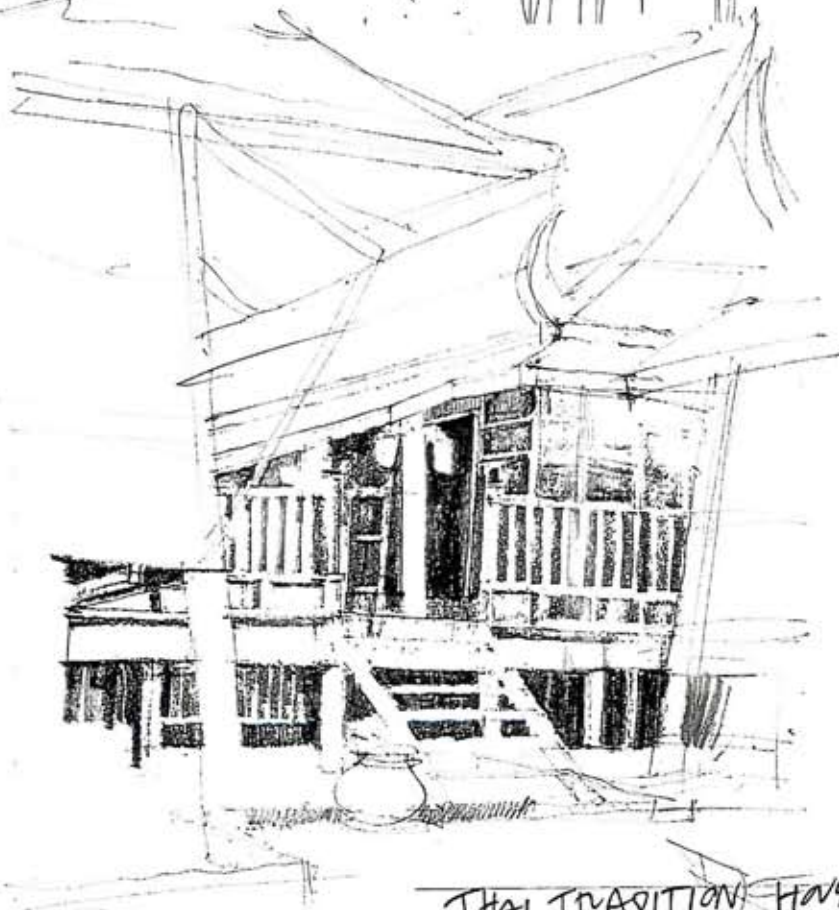
"...school began with a man under the tree..." - Louis I. Kahn

# JAPANESE ARCHITECTURE STUDIES NOTEBOOK



# SKETCHES VARIOUS SOURCES





THAI TRADITION HOUSE  
AT CHULALONGKORN UNIVERSITY  
LINE, PENCIL AND WATER COLOR



windows of opportunity



For one other thing...  
..we should never forget who we are, where we come from and, most importantly, reach out to what we want to be and give back to the community.

**สร้าง ครอบเกษม**